

**15 Year**  
Warranty

**James Hardie brings unique designs to life with beautiful fibre cement products that are built to last. It's Possible™**



**Hardie® VL Plank**  
Light Mist



**JamesHardie™**



**Hardie® Plank**

**Hardie® VL Plank**





# Contents

- 06 It's Possible™
- 08 Introducing the Hardie® Plank products
- 10 Create interest with installation styles
- 12 Choose long-lasting colour
- 14 The finishing touch
- 16 Design flexibility
- 20 Home renovations
- 24 Future-proof your home
- 26 Information & inspiration



# We all have a dream for our home and with James Hardie, It's Possible™

If you're looking for a versatile, low maintenance with a natural and beautiful texture, look no further than **Hardie®** fibre cement cladding. It's the facade of choice for builders, architects and homeowners alike, protecting and beautifying millions of homes worldwide.

- Most natural look with premium colour range
- Low maintenance thanks to unique ColourPlus™ Technology finishes
- At least 20 % faster installation

**15 Year**  
Warranty







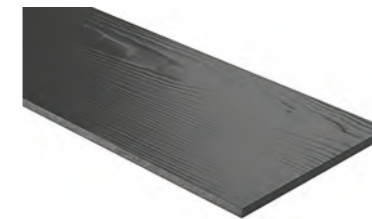
Hardie® VL Plank horizontal installation in Light Mist



# Introducing the Hardie® Plank products

Hardie® Plank products include two profiles, made from advanced material fibre cement. With an A2-s1, d0 fire rating, our boards are non-combustible and offer the best fire protection possible for any coloured facade board.

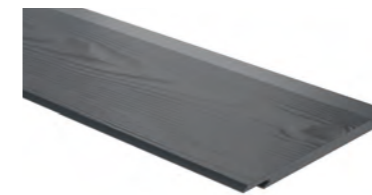
## Hardie® Plank fibre cement cladding



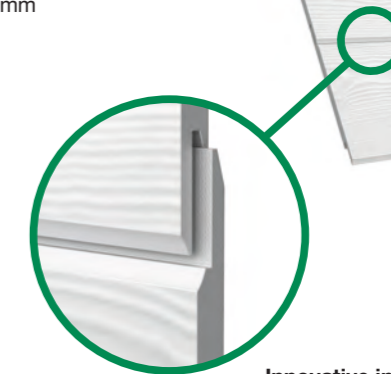
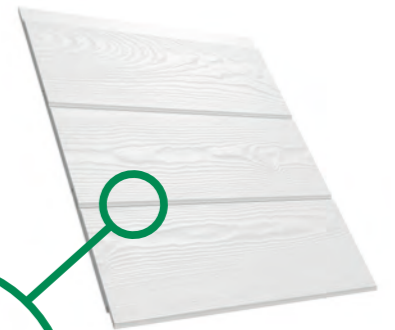
Dimensions: 3600 x 180 x 8mm  
Weight per piece: 7.4kg  
Pieces per m<sup>2</sup>: 1.85  
Visible surface: 150 - 180mm  
Colours: 21  
Textures: Cedar and Smooth



## Hardie® VL Plank fibre cement cladding



Dimensions: 3600 x 214 x 11mm  
Weight per piece: 10.5kg  
Pieces per m<sup>2</sup>: 1.52  
Visible surface: 182mm  
Colours: 8  
Textures: Cedar



### BBA Certified

Hardie® cladding has been assessed by the British Board of Agrément and has been awarded BBA certificate number 04/4147.

### Innovative interlocking system

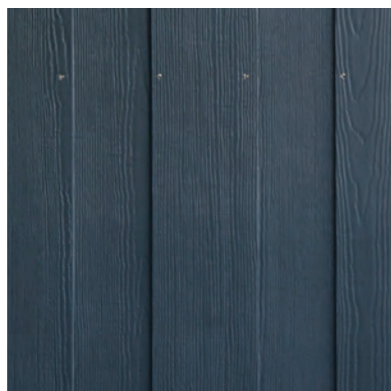
Hardie® VL Plank profiles offer hidden fixing, thanks to our innovative tongue and groove system that does not require any additional accessories for fixing and can easily be nailed.



# Create interest with installation styles

Installation is quick and easy, offering maximum flexibility with options to fit our boards horizontally, vertically, ship-lapped or open jointed.

**Hardie® Plank** cladding  
Create a classic finish with Hardie® Plank boards in horizontal lap, vertical hit and miss or open joint styles, playing around with different colours and textures.



**Hardie® Plank** cladding  
vertical hit and miss



**Hardie® Plank** cladding  
horizontal overlap

**Hardie® VL Plank** cladding  
The seamless interlock of Hardie® VL Plank cladding epitomises architectural modern design, perfect for both horizontal and vertical installation. The clip-less system is 20% faster to install than comparable interlock solutions.



**Hardie® VL Plank** cladding  
horizontal installation



**Hardie® VL Plank** cladding  
vertical installation





# Choose long-lasting colour

The **Hardie®** fibre cement range is available in two textures and a variety of vibrant colours using **ColourPlus™** Technology – our multi-coat, baked-on finish that gives a durable, fade-resistant finish that lasts for years to come. Combining distinct beauty and high performance in a way that no other finish does.

- 21 colours for **Hardie® Plank** cladding
- 8 colours for **Hardie® VL Plank** cladding
- Unique **ColourPlus™** Technology finishes

## Textures



Cedar



Smooth

## Colours

■ Hardie® Plank ● Hardie® VL Plank



Arctic White ■ ●



Sail Cloth ■ ●



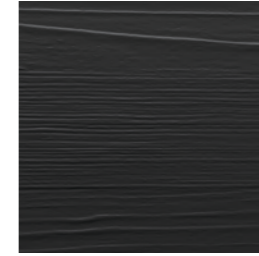
Light Mist ■ ●



Grey Slate ■ ●



Anthracite Grey ■ ●



Midnight Black ■ ●



Cobble Stone ■



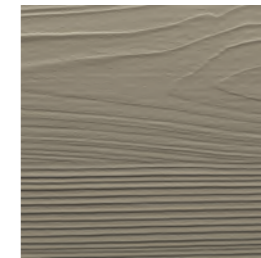
Woodland Cream ■



Soft Green ■



Pearl Grey ■



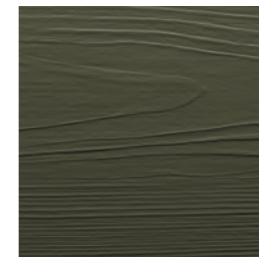
Monterey Taupe ■



Khaki Brown ■ ●



Heathered Moss ■



Mountain Sage ■



Boothbay Blue ■



Evening Blue ■



Traditional Red ■



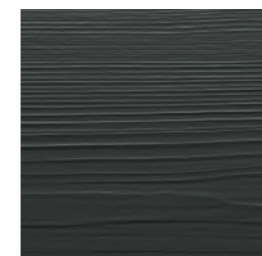
Chestnut Brown ■ ●



Timber Bark ■



Rich Espresso ■



Iron Grey ■

Our colour palette has been developed with leading industry experts and is bespoke to cladding products from James Hardie.



# The finishing touch

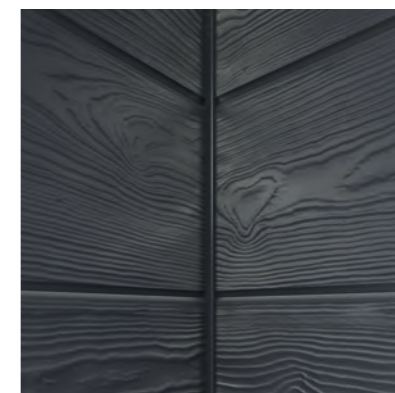
Trim is that final touch that completes your home's design. Accentuate corners, columns, doors, windows and more with our complementary trims.



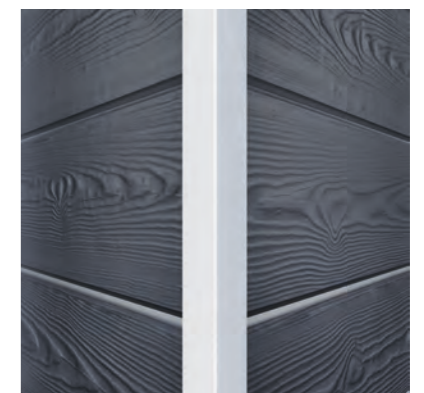
**Hardie® NT3® Trim fibre cement profile**  
for exterior corners:  
Dimensions: 3655 x 90/140 x 25mm



**Hardie™ Plank MetalTrim™ profile**  
for exterior corners:  
Length: 3000mm



**Hardie® NT3® Trim profile**  
for interior corners:  
Length: 3000mm



**Hardie® VL Plank 2-Part profile**  
for exterior corners:  
Length: 3000mm



# Design flexibility



Hardie® Plank lap cladding combined with brick – Colour: Iron Grey



Hardie® Plank cladding in a combination of vertical hit and miss and horizontal overlap look – Colours: Boothbay Blue and Arctic White





Hardie® VL Plank cladding installed horizontally – Colour: Arctic White



Hardie® VL Plank cladding installed horizontally – Colour: Anthracite Grey



# Home renovations

This stunning refurbishment saw an extension and new build garage block transformed with render and Soft Green **Hardie® Plank** cladding, brought together to create an elegant countryside retreat.

The property, located near Galleywood Common in Chelmsford, was originally a self-build home constructed in the 1960s. Over time, the house aged badly and the owners decided a full refurbishment was due.



Before

Hyland Homes was commissioned to overhaul the property through construction of a large extension and detached garage block. The end result is a complete transformation into what is now a highly desirable, classically designed home.



After

” **Hardie® Plank** is our ‘go to’ recommendation for any homeowner wanting a classic facade that endures.

Premium Stockist





” Mixing traditional with modern was key to our design and so we quickly switched to **Hardie® VL Plank** for the crisp, clean lines to contrast with the exposed stone.

Private Homeowner



This traditional home in Harrogate was extended at the rear with a new double-storey extension and contrasting tongue and groove **Hardie® VL Plank** cladding on the upper level.

The homeowner chose **Hardie® VL Plank** boards for their fresh, symmetrical look and low maintenance properties.

Here, Anthracite Grey in Cedar texture complements the local stone to offer a strong contrast. The end result is a striking renovation that beautifully captures the character of the home's local heritage.



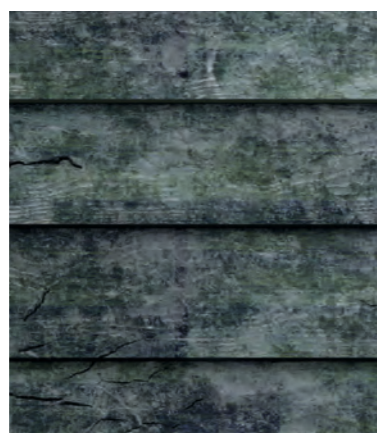


# Future-proof your home

Choosing the right cladding for your home is an important decision, with each cladding type offering a variety of options in texture, colour, size, finish and installation method. Ultimately, the choice of facade material may be decided by a number of considerations.



Hardie® Plank range



Wood

### Durability

Thanks to its special yet natural composition, Hardie® fibre cement can withstand the effects of the weather in a wide variety of climates. For a permanently beautiful and durable facade.

Wood cladding and uPVC may be susceptible to fading, cracking and sagging over time.

### Low maintenance

Hardie® Plank range comes with ColourPlus™ Technology, a multi-coat, baked-on finish that is fade-resistant and does not require regular repainting.

As a result of fading, painted wood needs to be repainted every 5 years, and stained wood treated every 3 years. uPVC cladding may also be susceptible to fading, discolouration and cannot be repainted.



Hardie® Plank range

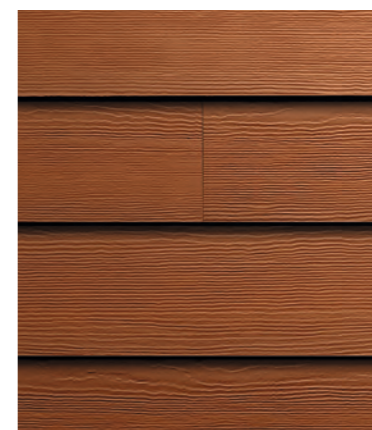


Wood

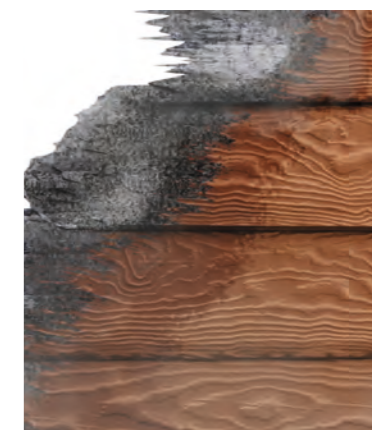
### Fire resistance

Hardie® Plank range will not ignite when exposed to direct flame or extreme heat; it is non-combustible with a fire classification of A2-s1, d0 – the highest possible fire rating for a coloured facade board.

Combustible material like wood burns easily and very quickly, producing significant amounts of heat and smoke. uPVC cladding can melt and warp when exposed to fire.



Hardie® Plank range



Wood



Hardie® Plank range



Wood

### Moisture resistance

Tried and tested, our boards offer long-lasting protection and stand up beautifully, whatever the weather.

Humidity and precipitation may cause paint to crack and peel prematurely when using wood-based products as they expand and contract due to changes in climate conditions. Moisture may also cause rotting, swelling and shrinkage.

uPVC cladding is also known to become brittle and susceptible to cracking when cold.

### Pest resistance

Hardie® Plank range is resistant to pests and rodents, which can cause considerable damage to wooden facades.

Both wood and uPVC cladding are vulnerable to pest infestation. In the long run, the material would need to be replaced.



Hardie® Plank range



Wood



# Inspiration & information

Further product information  
and solutions:

**[Jameshardie.co.uk](http://Jameshardie.co.uk)**

With our online colour  
visualiser tool, you are one  
step closer to making your  
exterior design a reality.

Try it here:

**[Design.Jameshardie.co.uk](http://Design.Jameshardie.co.uk)**



You will find the latest version of this brochure in digital form on our website. Technical modifications subject to changes. Should you require additional information, please contact our customer service. All our products with ColourPlus™ Technology come with a 15-year warranty. More detailed information can be found on our website. Last updated 03/2023.

© 2023 James Hardie Europe GmbH.  
™ and ® denote registered and unregistered trademarks of James Hardie Technology Limited and James Hardie Europe GmbH.

**Hardie® Plank range  
Personalised Sample Box**

Scan the code to order samples directly to your home.



**Hardie® VL Plank  
Installation Video**

Scan the code to watch the step-by-step installation video.



**James Hardie Building Products Ltd**

7 The Priory  
Old London Road  
Canwell  
Sutton Coldfield  
B75 5SH

**Contact information:**

Tel: 0121 311 3480  
Email: [info@jameshardie.co.uk](mailto:info@jameshardie.co.uk)  
[www.jameshardie.co.uk](http://www.jameshardie.co.uk)

har-090-00060

